

Nativity Diorama Craft

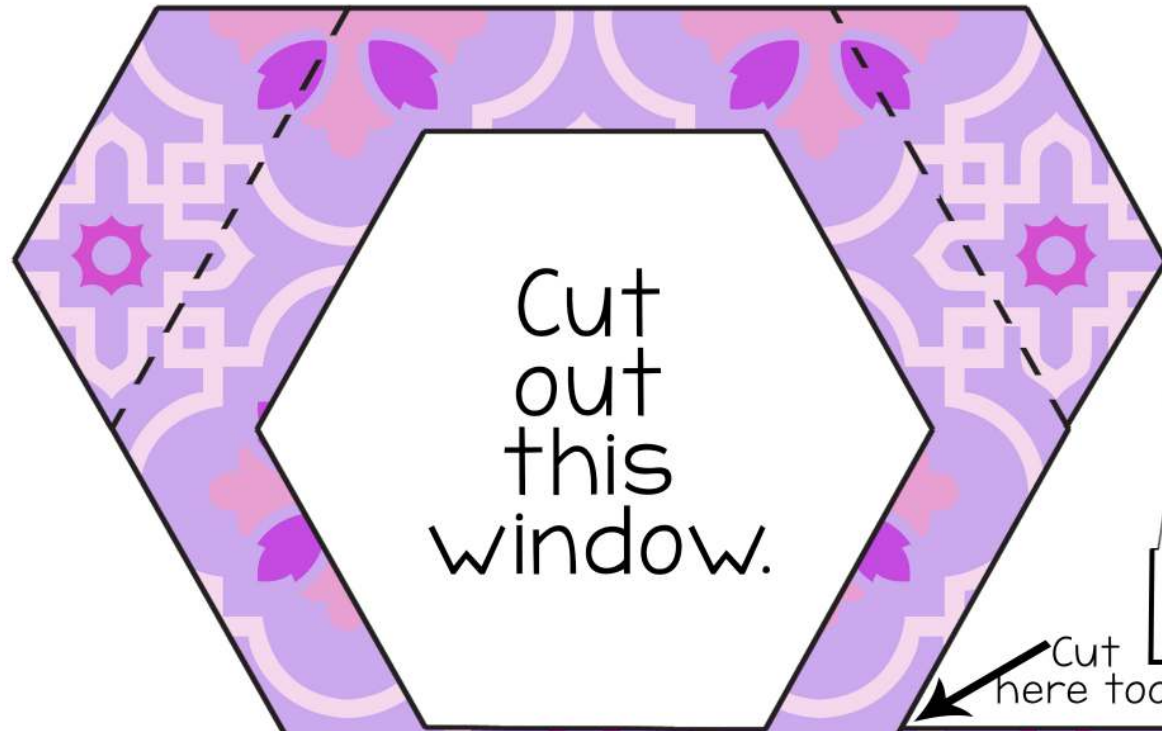
Materials:

- 2 template sheets printed on cardstock paper
- Small, sharp scissors
- Glue or glue stick
- Scoring device (optional)
- Straight edge, such as a ruler (optional)
- Adult hands helping little hands.

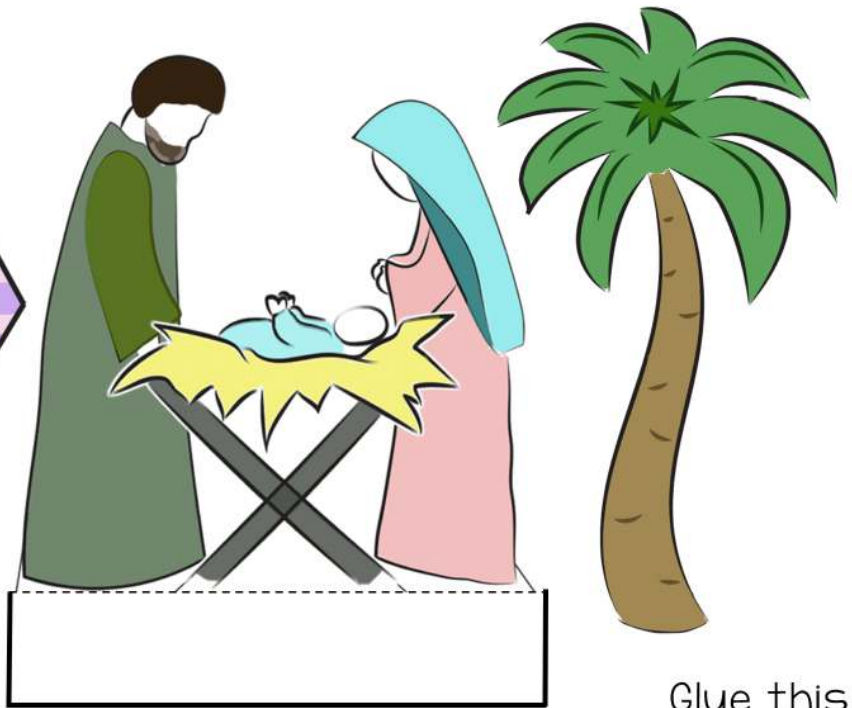
Instructions:

1. Cut out the two boxes along the solid black outlines.
2. Carefully cut out the hexagonal-shaped window.
3. Apply glue to the last tab on the right at the end of the first box. Adhere this tab to the back side of the next box shape. You should now have one large box template.
4. Fold the dotted lines inward. Before folding, you may want to score the dotted lines with the non-serrated edge of a butter knife. Use a ruler to keep your scored lines straight.
5. Glue the tabs to the inside of the shape, working your way around until the entire hexagonal box is formed.
6. Cut out baby Jesus, Mary, and Joseph. It's fine to leave some white space around these images.
7. Fold and crease the dotted line of the family to make a stand. Apply glue to the back side of the tab.
8. Center the family inside of the box. Press the tab down firmly.
9. Next, cut out the angel, palm tree and star.
10. Arrange these around the outside of the box and glue in place to complete the diorama.



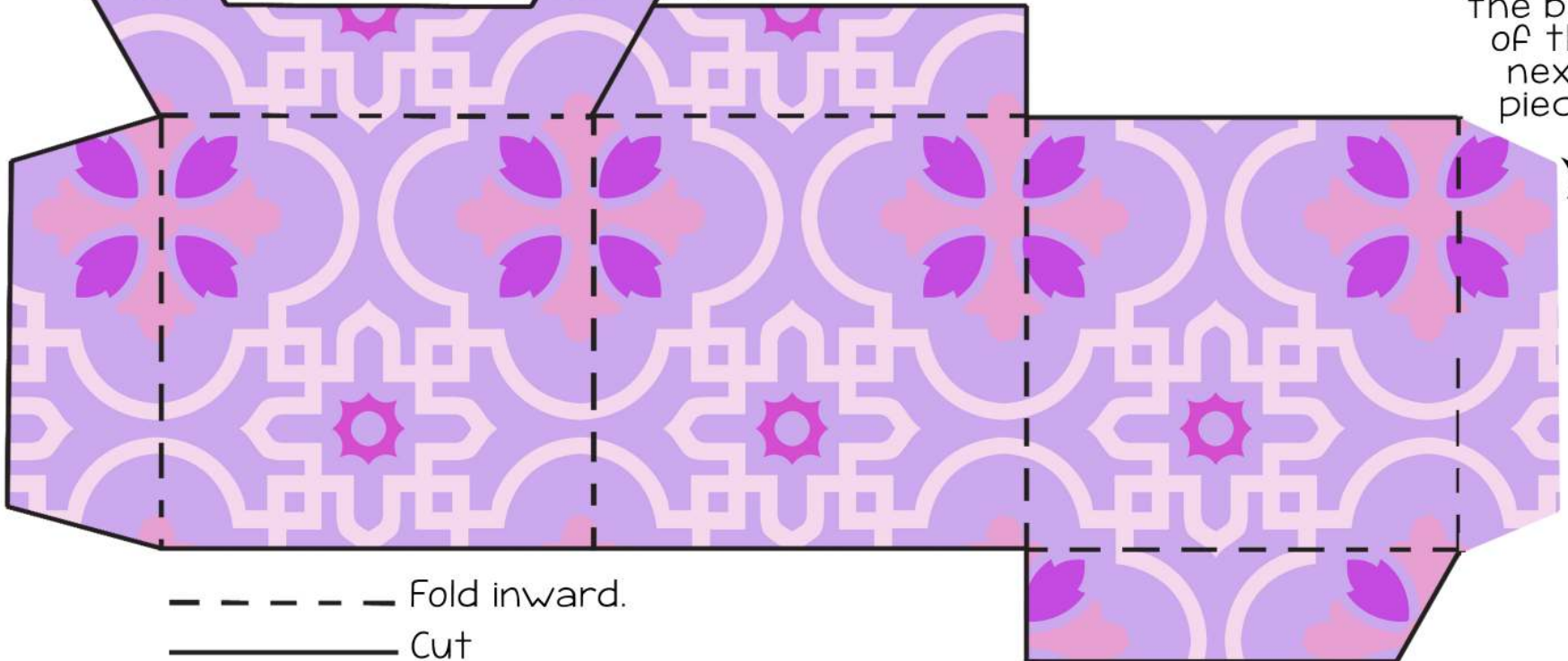


Cut
out
this
window.



Cut
here too.

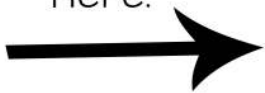
Glue this
tab to
the back
of the
next
piece.



----- Fold inward.
————— Cut

----- Fold inward.
——— Cut

Glue the
tab from
the
other
piece to
the back
here.



Cut
here too.

